

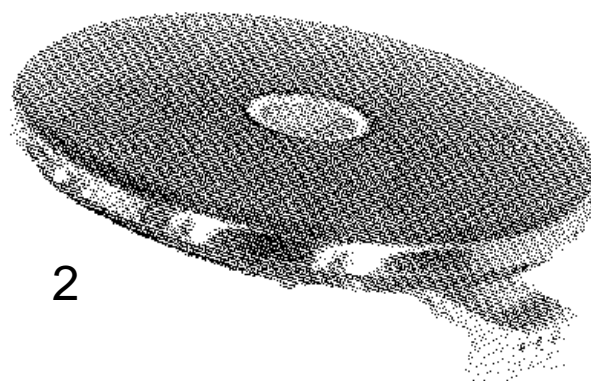
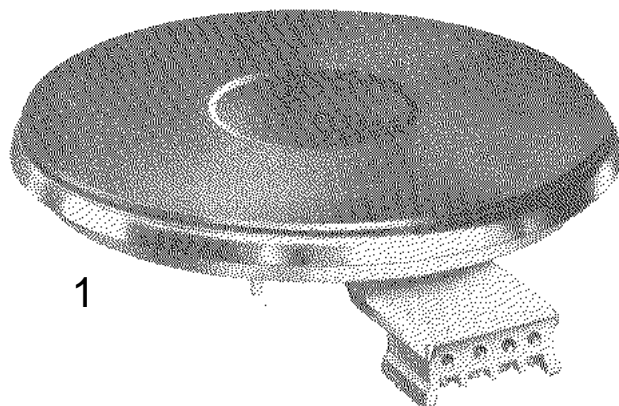


PLAQUE E.M.

Ø 180 mm

ENJOLIVEUR 8 mm.

SERIE 12.



| N° | REFERENCE | TYPE | MODELE | PUISSANCE | VOLTAGE |
|----|------------|----------------|-----------------|-----------|---------|
| 1 | 1PN1885450 | NORMALE | | 1500 W | 220 V |
| 1 | 1PN1885451 | NORMALE | | 1500 W | 380 V |
| 1 | 1PR1890460 | RAPIDE | | 2000 W | 220 V |
| 1 | 1PR1890461 | RAPIDE | | 2000 W | 380 V |
| 2 | 1PT1890350 | THERMOSTATIQUE | BRIDE | 2000 W | 220 V |
| 2 | 1PT1890351 | THERMOSTATIQUE | BRIDE | 2000 W | 380 V |
| 2 | 1PT1890352 | THERMOSTATIQUE | TIGE FILETEE M4 | 2000 W | 220 V |
| 2 | 1PT1890353 | THERMOSTATIQUE | TIGE FILETEE M4 | 2000 W | 380 V |

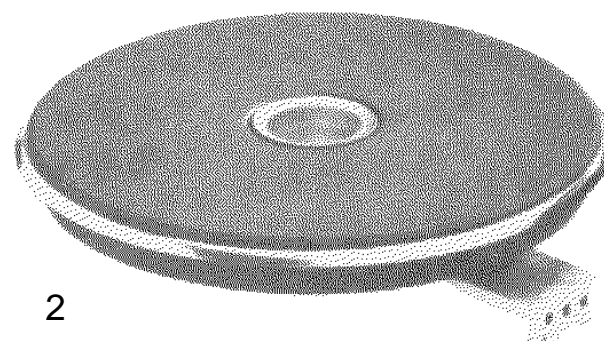
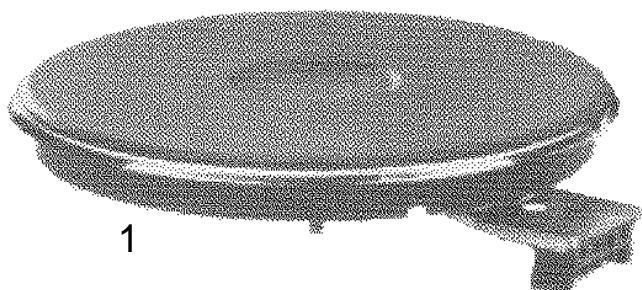


PLAQUE E.M.

Ø 180 mm

ENJOLIVEUR 4 mm.

SERIE 13.



| N° | REFERENCE | TYPE | MODELE | PUISSANCE | VOLTAGE |
|----|------------|----------------|--------|-----------|---------|
| 1 | 1PN1885454 | NORMALE | | 1500 W | 220 V |
| 1 | 1PR1890464 | RAPIDE | | 2000 W | 220 V |
| 2 | 1PT1890354 | THERMOSTATIQUE | BRIDE | 2000 W | 220 V |

DEOMATIC

RUE DES ALLIES 34
1190 BRUXELLES

TEL : 02/343.97.64
FAX: 02/343.90.31